

PUMP INFORMATION

- Type: Sump Pump(s)
 Grinder Pump(s)
 Non-Clog Pump(s)

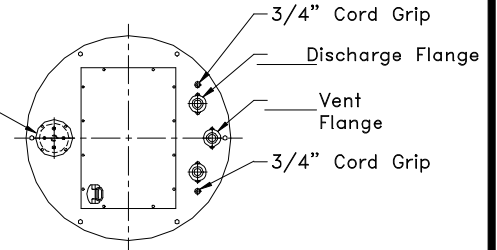
Model NO: _____
 Rating: _____ GPM _____ TDH
 Motor: _____ HP _____ RPM
 Elec: _____ PH _____ HZ _____ v
 Elec: _____ FL AMPS

DISCHARGE PIPE

- 304 Stainless Steel
 Sch40 Galvanized Steel
 Sch80 PVC Pipe
 1 1/4"
 1 1/2"
 2"
 3"

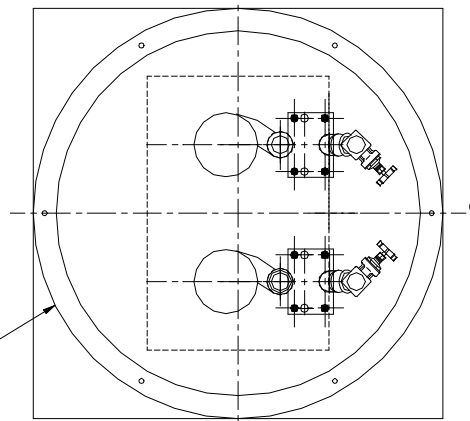
- Anti-Floatation Flange
 Fiberglass Encapsulated
 ASTM A-36 Steel
 Round Fiberglass
 None

Inspection Plate
 with (4) 1/2" Cord Grips and
 1" Coupling



Gas Tight Hatch Cover

- Fiberglass Aluminum Steel



- 1" Float Pole
 304 Stainless Steel
 Sch40 Galvanized Steel
 Sch80 PVC Pipe

Cast Iron Inlet Hub
 (Different Sizes and
 Types Available)

ELEV

INV ELEV

ELEV
 HIGH LEVEL ALARM

ELEV
 PUMP #2 ON

ELEV
 PUMP #1 ON

ELEV
 PUMP OFF

ELEV

- 3/16" Lifting Chain
 304 Stainless Steel
 Galvanized Steel

* Stainless Steel Cable
 is Available

- Gate Valve
 Brass
 Sch 80 PVC

Union

- Ball Check Valve
 Cast Iron
 Sch80 PVC

* 3" Systems are
 Provided with Brass
 Swing Check Valve

- Discharge Pipe
 304 Stainless Steel
 Sch40 Galvanized Steel
 Sch80 PVC Pipe

45° Elbows

- 304 Stainless Steel
 Sch40 Galvanized Steel
 Sch80 PVC Pipe

3/4" Guiderail

- 304 Stainless Steel
 Sch40 Galvanized Steel

- EZ2125 - 1 1/4" Lift-Out Coupling
 EZ2150 - 1 1/2" Lift-Out Coupling
 EZ2200 - 2" Lift-Out Coupling
 EZ3320 - 3" Lift-Out Coupling For 2" Pump
 EZ3300 - 3" Lift-Out Coupling



EZ-Out Prefabricated
 Fiberglass Lift Station
 Duplex - Top Discharge
 With Valves

Scale: None
 Drawn By: KM
 App'd By: _____
 Date: 04/21/03

This print is and contains confidential proprietary information owned exclusively by TOPP INDUSTRIES, INC. It is furnished on a strictly confidential basis. This restriction includes, but is not limited to the condition that this print will not only be used as a record or to identify or inspect parts or for other information purposes and will not be used to manufacture or procure the manufacture of the items shown in this print by any other source than TOPP INDUSTRIES, INC.

Highway 25 North P.O. Box 420
 Rochester, IN 46975
 Phone: 800/354-4534 Fax: 574/223-6106

Supersedes Prints
 Prior To: 04/21/03

Reference
 No: 16735

Revisions

(A)	First Released.